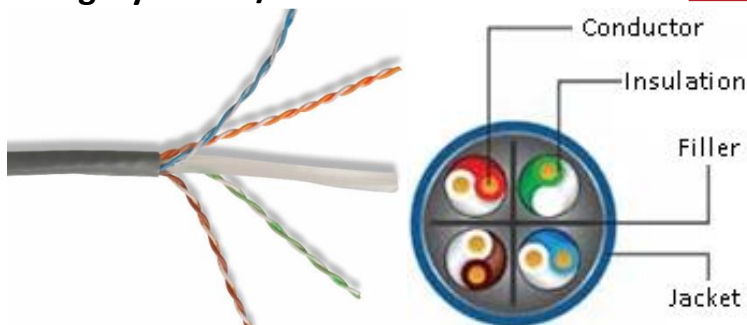


## Category 6A – U/UTP Ethernet Cable



### Product Overview

Alston Systems Category 6A U/UTP Ethernet Cable can be used horizontal or vertical configuration as backbone. It constitutes the base of structured cabling network and helps in transmission of high speed data, digital and analogue voice and video signals. These cables are made of 23 AWG copper wires with a frequency of 500MHz can transmit data at 10 BASE-T, 100BASE-TX, 1000BASE-T and 10G BASE-T (Gigabit Ethernet).

### Construction

| Construction | Conductor | Pairs | Jacket | Shielding | Nom O.D (mm) |
|--------------|-----------|-------|--------|-----------|--------------|
| UTP          | 23AWG     | 4     | PVC    | -         | 6.5          |
| UTP          | 23AWG     | 4     | LSZH   | -         | 6.5          |

### Specifications

|                   |                          |
|-------------------|--------------------------|
| Conductor         | 0.58mm Bare Solid Copper |
| Insulation        | Color-coated PE          |
| Spline            | White PE                 |
| Jacket            | PVC/LSZH                 |
| Flammability      | CMR                      |
| Rated Temperature | -25° C to 75° C          |

### Standards

- IEC 61156-5:2009 (Ed2.0)
- UL1581 ANSI/TIA-568.C.2
- ISO /IEC 11801:2002(Ed.2.0) including amendments A1:2008 and A2:2010
- EN 50173-1:2011, EN50173-2:2007 including amendment A1:2010, ANSI/TIA-568-C.2:2009

### Electrical Characteristics

| Frequency (MHz) | Impedance (Ohm) | RL (dB) | Attenuation (dB/100m) | NEXT (dB) | NEXT Power Sum (dB) | ELFECT (dB) | PSELFEXT (dB) |
|-----------------|-----------------|---------|-----------------------|-----------|---------------------|-------------|---------------|
| 1               | 100±15          | 20.0    | 2.0                   | 74.3      | 72.3                | 67.8        | 64.8          |
| 4               | 100±15          | 23.0    | 3.8                   | 65.3      | 63.3                | 55.8        | 52.7          |
| 8               | 100±15          | 25.0    | 5.3                   | 60.8      | 58.8                | 49.7        | 46.7          |
| 10              | 100±15          | 25.0    | 6.0                   | 59.3      | 57.3                | 47.8        | 44.8          |
| 16              | 100±15          | 25.0    | 7.6                   | 56.2      | 54.3                | 43.7        | 40.7          |
| 20              | 100±15          | 25.0    | 8.5                   | 54.8      | 52.8                | 41.8        | 38.8          |
| 25              | 100±15          | 24.3    | 9.5                   | 53.3      | 51.3                | 39.8        | 36.8          |
| 31.25           | 100±15          | 23.6    | 10.7                  | 51.9      | 49.9                | 37.9        | 34.9          |
| 62.50           | 100±15          | 21.5    | 15.4                  | 47.4      | 45.4                | 31.9        | 28.9          |
| 100             | 100±15          | 20.1    | 19.8                  | 44.3      | 42.3                | 27.8        | 24.8          |
| 155             | 100±20          | 18.8    | 25.2                  | 41.5      | 39.5                | 23.9        | 20.9          |
| 200             | 100±20          | 18      | 29                    | 39.8      | 37.8                | 21.8        | 18.8          |
| 250             | 100±20          | 17.3    | 32.8                  | 38.3      | 36.3                | 19.8        | 16.8          |

### Ordering Information

| Part Number | Description   |
|-------------|---|
| 30110061X   | Alston Systems, Category 6A U/UTP Ethernet Cable, 23 AWG 305m/box, PVC  |
| 30210061X   | Alston Systems, Category 6A U/UTP Ethernet Cable, 23 AWG 305m/box, LSZH |

Note: "X" denotes the color of the cable. (1 – Blue, 2 – Gray, 3 – Black, 4 – Green, 5 – Red, 6 – White, 7 – Yellow, 9-Orange)